



MARINA PALMS

YACHT CLUB & RESIDENCES

M I A M I

info@condomarinapalms.com

305-804-7558

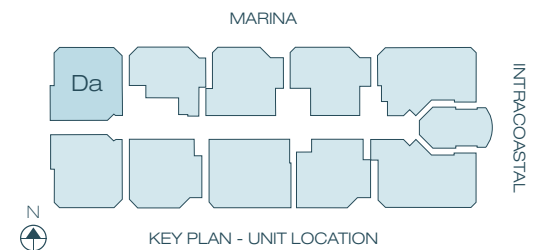
Standard Residences



UNIT Da - 01 Line

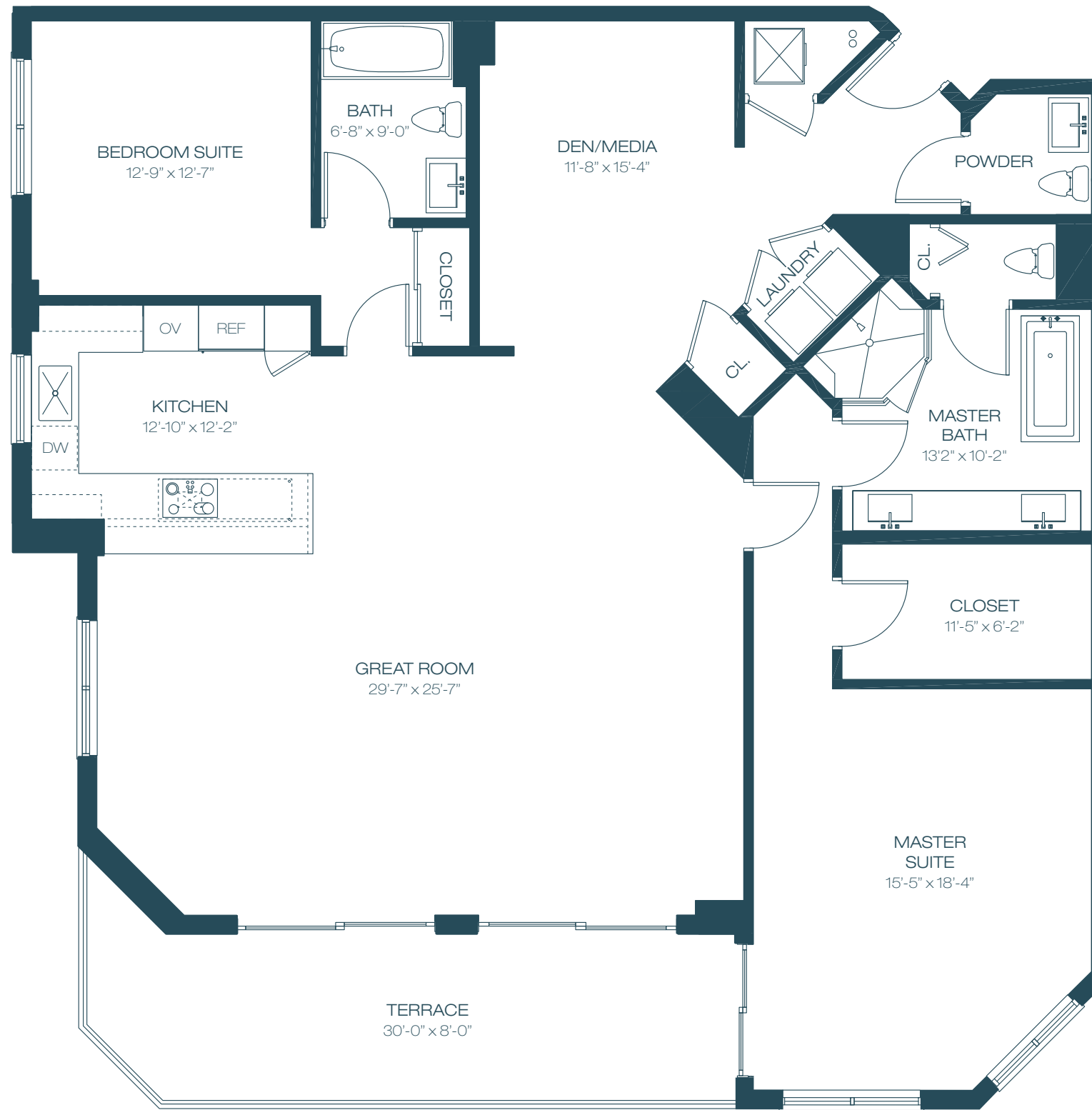
2	BEDROOMS + DEN	2.5	BATHROOMS
INTERIOR		2,114 SF	196 M ²
TERRACE		241 SF	22 M ²
TOTAL		2,355 SF	219 M ²

17201 BISCAYNE BOULEVARD, NORTH MIAMI BEACH, FL 33160 P 1 866 990 1800 MARINAPALMS.COM



INTRACOASTAL

All dimensions are approximate and all floor plans and development plans are subject to change. Stated square footages and dimensions are measured to the exterior boundaries of the exterior walls and the centerline of interior demising walls between units and in fact vary from the dimensions that would be determined by using the description and definition of the "Unit" set forth in the Declaration (which generally only includes the interior airspace between the perimeter walls and excludes all interior structural components and other common elements). This method used herein is generally found in sales materials and is provided to allow a prospective buyer to compare the Units with units in other condominium projects that utilize the same method. The square footage of the units, as determined under both methods, can be found in Exhibit 2 to the Declaration of Condominium. Terraces are Limited Common Elements, but are not part of the Unit. Measurements of rooms set forth on this floor plan are generally taken at the farthest points of each given room (as described above and as if the room were a perfect rectangle), without regard for any cutouts or variations. Accordingly, the area of the actual room will typically be smaller than the product obtained by multiplying the stated length and width. All square footages and dimensions are estimates which are based on preliminary plans and will vary with actual construction. This floor plan represents the typical floor plan for the residence type indicated and is provided for informational purposes only. The actual floor plan of the residence may differ. All floor plans, specifications and other development plans are proposed and conceptual only, and are subject to change and will not necessarily accurately reflect the final plans and specifications for the development.

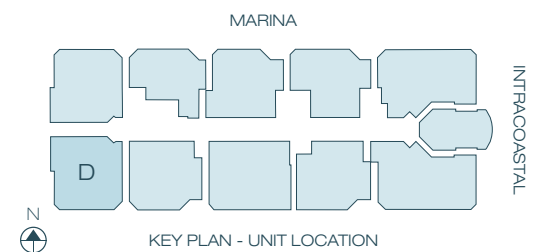


UNIT D - 02 Line

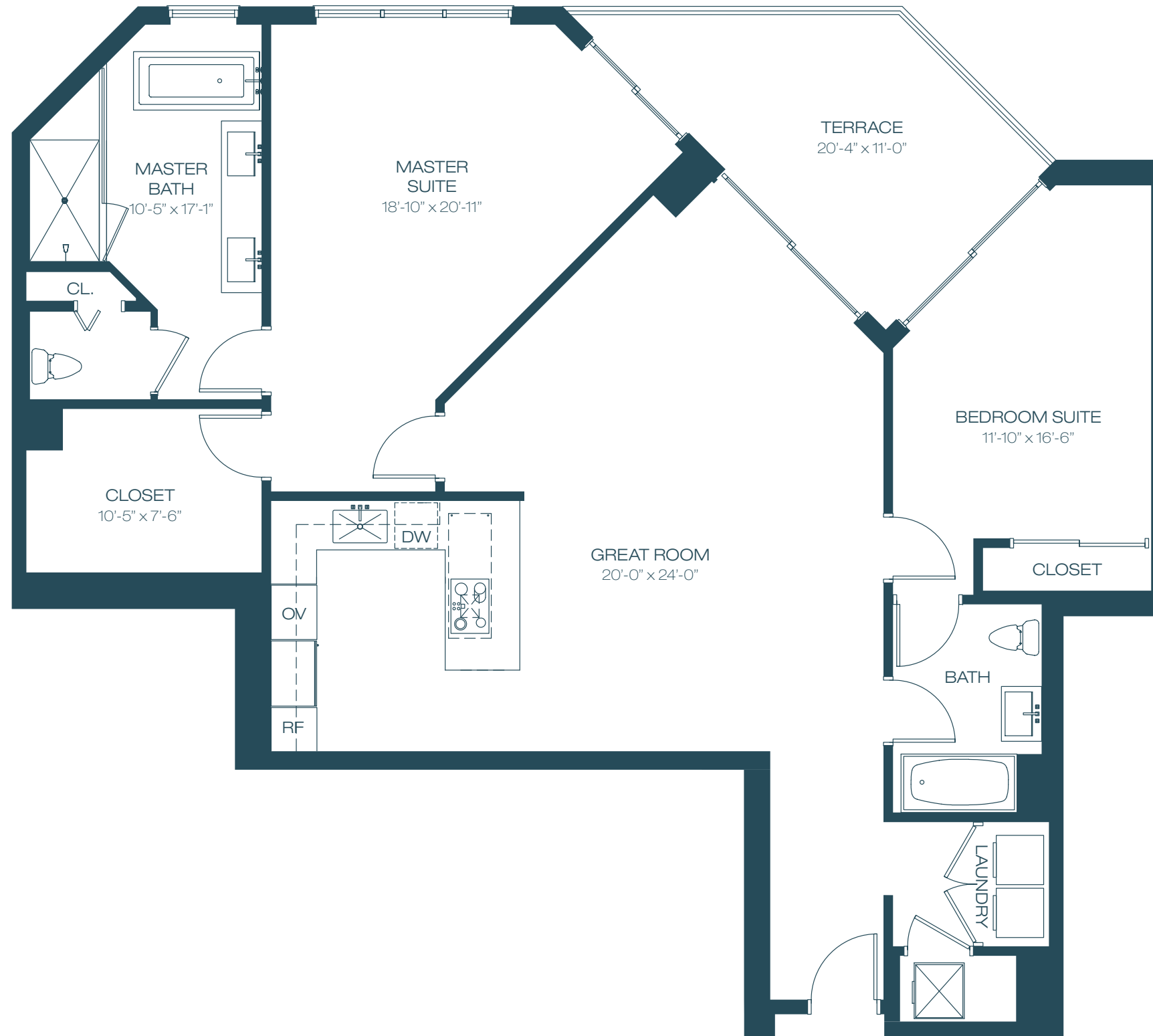
2	BEDROOMS + DEN	2.5	BATHROOMS
INTERIOR		2,114 SF	196 M ²
TERRACE		241 SF	22 M ²
TOTAL		2,355 SF	218 M ²

17201 BISCAYNE BOULEVARD, NORTH MIAMI BEACH, FL 33160 P 1 866 990 1800 MARINAPALMS.COM

INTRACOASTAL



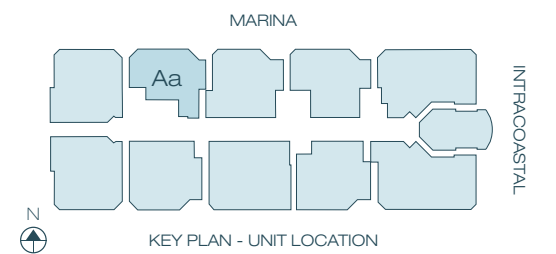
All dimensions are approximate and all floor plans and development plans are subject to change. Stated square footages and dimensions are measured to the exterior boundaries of the exterior walls and the centerline of interior demising walls between units and in fact vary from the dimensions that would be determined by using the description and definition of the "Unit" set forth in the Declaration (which generally only includes the interior airspace between the perimeter walls and excludes all interior structural components and other common elements). This method used herein is generally found in sales materials and is provided to allow a prospective buyer to compare the Units with units in other condominium projects that utilize the same method. The square footage of the units, as determined under both methods, can be found in Exhibit 2 to the Declaration of Condominium. Terraces are Limited Common Elements, but are not part of the Unit. Measurements of rooms set forth on this floor plan are generally taken at the farthest points of each given room (as described above and as if the room were a perfect rectangle), without regard for any cutouts or variations. Accordingly, the area of the actual room will typically be smaller than the product obtained by multiplying the stated length and width. All square footages and dimensions are estimates which are based on preliminary plans and will vary with actual construction. This floor plan represents the typical floor plan for the residence type indicated and is provided for informational purposes only. The actual floor plan of the residence may differ. All floor plans, specifications and other development plans are proposed and conceptual only, and are subject to change and will not necessarily accurately reflect the final plans and specifications for the development.



UNIT Aa - 03 Line

2	BEDROOMS	2	BATHROOMS
INTERIOR		1,581 SF	147 M ²
TERRACE		168 SF	16 M ²
TOTAL		1,749 SF	163 M ²

17201 BISCAYNE BOULEVARD, NORTH MIAMI BEACH, FL 33160 P 1 866 990 1800 MARINAPALMS.COM



INTRACOASTAL

All dimensions are approximate and all floor plans and development plans are subject to change. Stated square footages and dimensions are measured to the exterior boundaries of the exterior walls and the centerline of interior demising walls between units and in fact vary from the dimensions that would be determined by using the description and definition of the "Unit" set forth in the Declaration (which generally only includes the interior airspace between the perimeter walls and excludes all interior structural components and other common elements). This method used herein is generally found in sales materials and is provided to allow a prospective buyer to compare the Units with units in other condominium projects that utilize the same method. The square footage of the units, as determined under both methods, can be found in Exhibit 2 to the Declaration of Condominium. Terraces are Limited Common Elements, but are not part of the Unit. Measurements of rooms set forth on this floor plan are generally taken at the farthest points of each given room (as described above and as if the room were a perfect rectangle), without regard for any cutouts or variations. Accordingly, the area of the actual room will typically be smaller than the product obtained by multiplying the stated length and width. All square footages and dimensions are estimates which are based on preliminary plans and will vary with actual construction. This floor plan represents the typical floor plan for the residence type indicated and is provided for informational purposes only. The actual floor plan of the residence may differ. All floor plans, specifications and other development plans are proposed and conceptual only, and are subject to change and will not necessarily accurately reflect the final plans and specifications for the development.

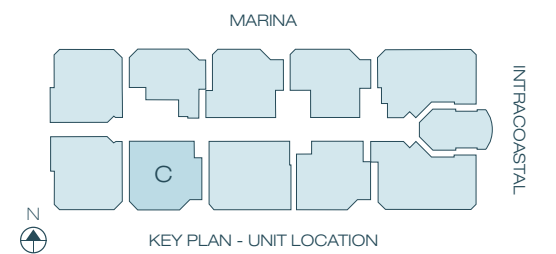


UNIT C - 04 Line

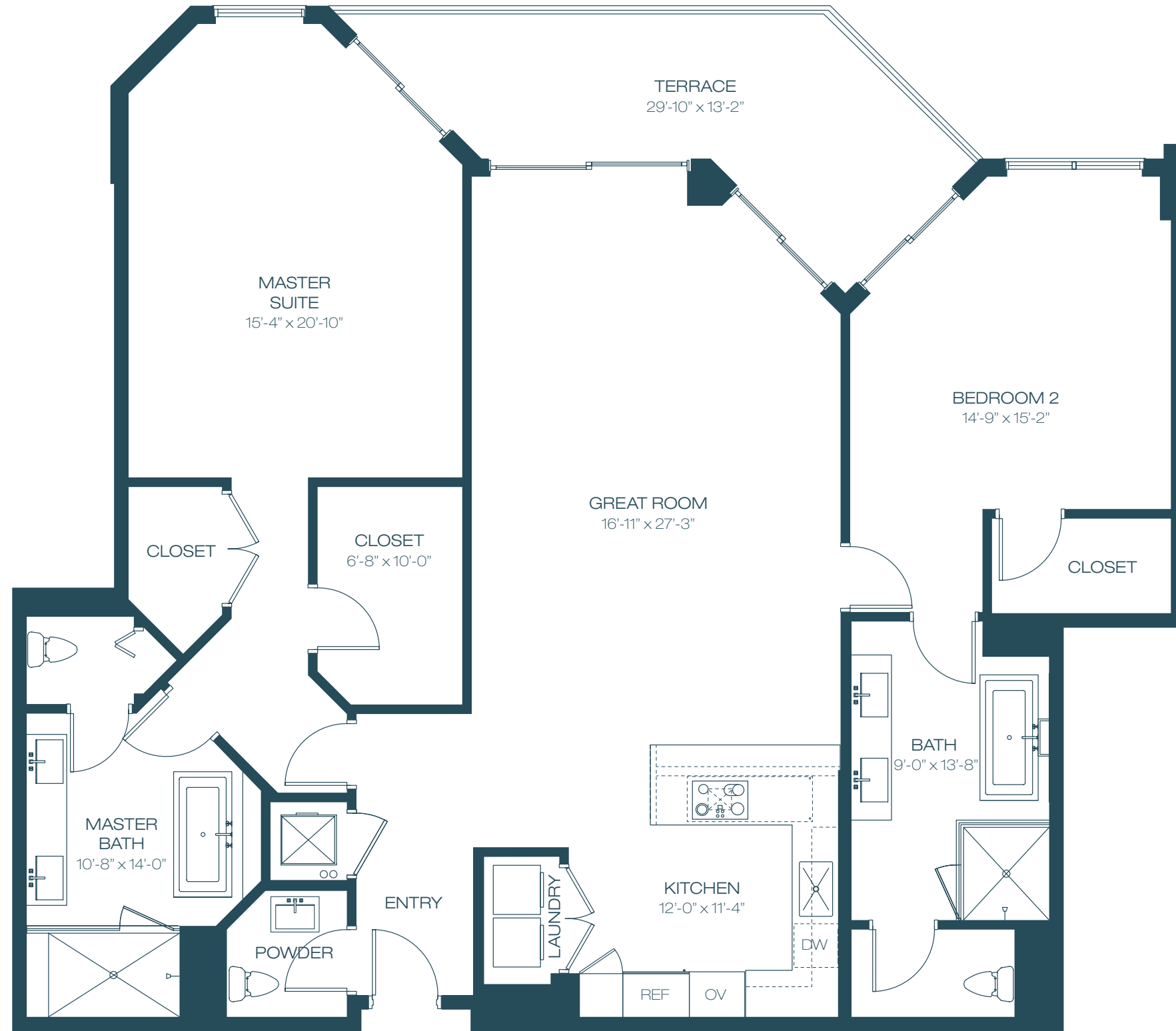
2	BEDROOMS + DEN	3	BATHROOMS
INTERIOR	1,961 SF		182 M ²
TERRACE	210 SF		20 M ²
TOTAL	2,171 SF		202 M ²

17201 BISCAYNE BOULEVARD, NORTH MIAMI BEACH, FL 33160 P 1 866 990 1800 MARINAPALMS.COM

INTRACOASTAL



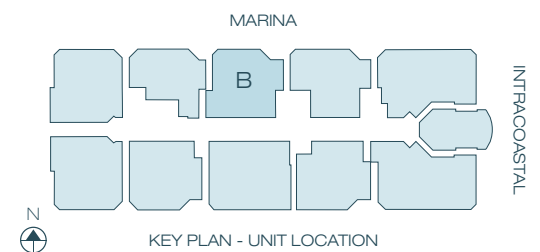
All dimensions are approximate and all floor plans and development plans are subject to change. Stated square footages and dimensions are measured to the exterior boundaries of the exterior walls and the centerline of interior demising walls between units and in fact vary from the dimensions that would be determined by using the description and definition of the "Unit" set forth in the Declaration (which generally only includes the interior airspace between the perimeter walls and excludes all interior structural components and other common elements). This method used herein is generally found in sales materials and is provided to allow a prospective buyer to compare the Units with units in other condominium projects that utilize the same method. The square footage of the units, as determined under both methods, can be found in Exhibit 2 to the Declaration of Condominium. Terraces are Limited Common Elements, but are not part of the Unit. Measurements of rooms set forth on this floor plan are generally taken at the farthest points of each given room (as described above and as if the room were a perfect rectangle), without regard for any cutouts or variations. Accordingly, the area of the actual room will typically be smaller than the product obtained by multiplying the stated length and width. All square footages and dimensions are estimates which are based on preliminary plans and will vary with actual construction. This floor plan represents the typical floor plan for the residence type indicated and is provided for informational purposes only. The actual floor plan of the residence may differ. All floor plans, specifications and other development plans are proposed and conceptual only, and are subject to change and will not necessarily accurately reflect the final plans and specifications for the development.



UNIT B - 05 Line

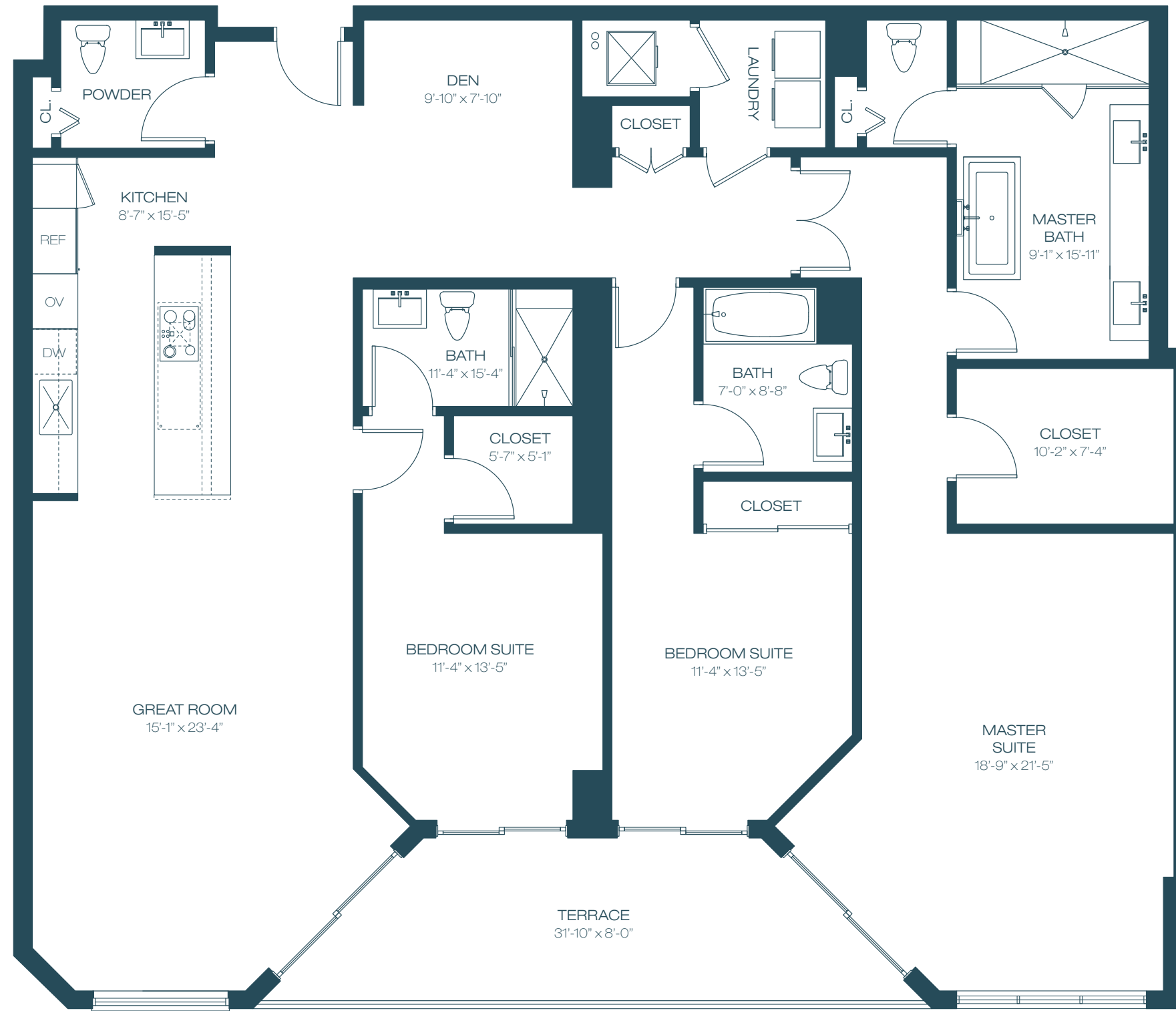
2	BEDROOMS	2.5	BATHROOMS
INTERIOR		1,976 SF	184 M ²
TERRACE		197 SF	18 M ²
TOTAL		2,173 SF	202 M ²

17201 BISCAYNE BOULEVARD, NORTH MIAMI BEACH, FL 33160 P 1 866 990 1800 MARINAPALMS.COM



INTRACOASTAL

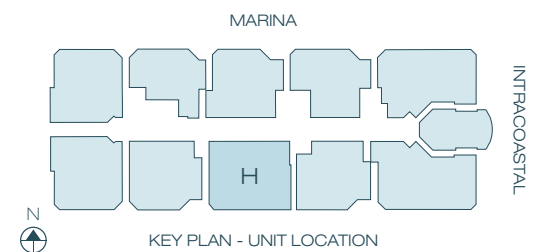
All dimensions are approximate and all floor plans and development plans are subject to change. Stated square footages and dimensions are measured to the exterior boundaries of the exterior walls and the centerline of interior demising walls between units and in fact vary from the dimensions that would be determined by using the description and definition of the "Unit" set forth in the Declaration (which generally only includes the interior airspace between the perimeter walls and excludes all interior structural components and other common elements). This method used herein is generally found in sales materials and is provided to allow a prospective buyer to compare the Units with units in other condominium projects that utilize the same method. The square footage of the units, as determined under both methods, can be found in Exhibit 2 to the Declaration of Condominium. Terraces are Limited Common Elements, but are not part of the Unit. Measurements of rooms set forth on this floor plan are generally taken at the farthest points of each given room (as described above and as if the room were a perfect rectangle), without regard for any cutouts or variations. Accordingly, the area of the actual room will typically be smaller than the product obtained by multiplying the stated length and width. All square footages and dimensions are estimates which are based on preliminary plans and will vary with actual construction. This floor plan represents the typical floor plan for the residence type indicated and is provided for informational purposes only. The actual floor plan of the residence may differ. All floor plans, specifications and other development plans are proposed and conceptual only, and are subject to change and will not necessarily accurately reflect the final plans and specifications for the development.



UNIT H - 06 Line

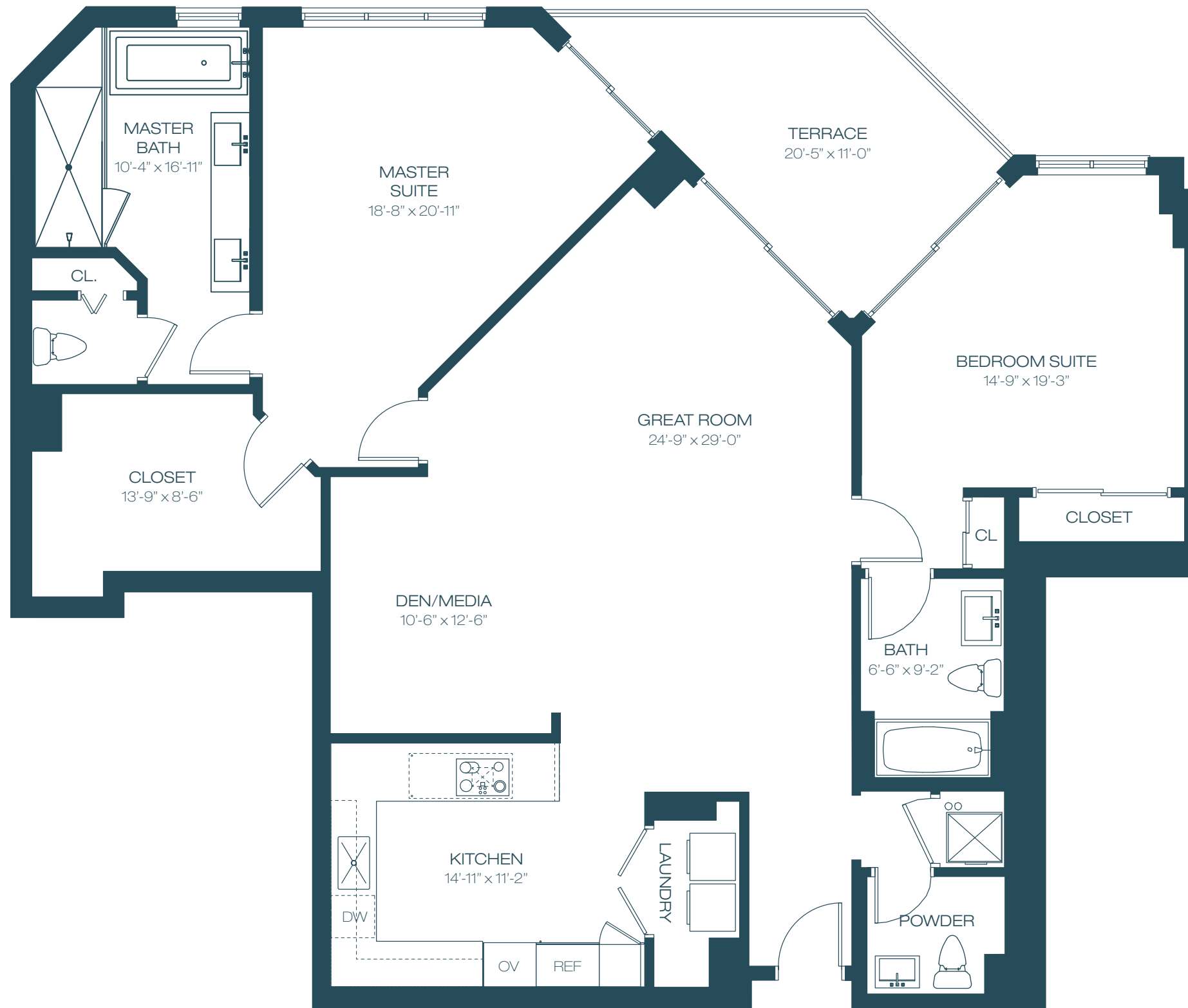
3	BEDROOMS + DEN	3.5	BATHROOMS
INTERIOR	2,332 SF		217 M ²
TERRACE	190 SF		18 M ²
TOTAL	2,522 SF		234 M ²

17201 BISCAYNE BOULEVARD, NORTH MIAMI BEACH, FL 33160 P 1 866 990 1800 MARINAPALMS.COM



INTRACOASTAL

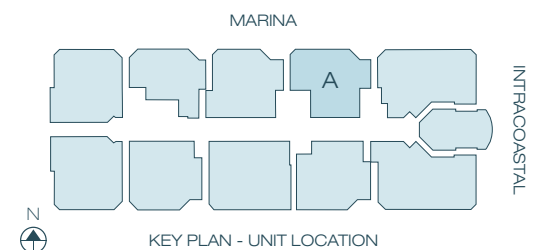
All dimensions are approximate and all floor plans and development plans are subject to change. Stated square footages and dimensions are measured to the exterior boundaries of the exterior walls and the centerline of interior demising walls between units and in fact vary from the dimensions that would be determined by using the description and definition of the "Unit" set forth in the Declaration (which generally only includes the interior airspace between the perimeter walls and excludes all interior structural components and other common elements). This method used herein is generally found in sales materials and is provided to allow a prospective buyer to compare the Units with units in other condominium projects that utilize the same method. The square footage of the units, as determined under both methods, can be found in Exhibit 2 to the Declaration of Condominium. Terraces are Limited Common Elements, but are not part of the Unit. Measurements of rooms set forth on this floor plan are generally taken at the farthest points of each given room (as described above and as if the room were a perfect rectangle), without regard for any cutouts or variations. Accordingly, the area of the actual room will typically be smaller than the product obtained by multiplying the stated length and width. All square footages and dimensions are estimates which are based on preliminary plans and will vary with actual construction. This floor plan represents the typical floor plan for the residence type indicated and is provided for informational purposes only. The actual floor plan of the residence may differ. All floor plans, specifications and other development plans are proposed and conceptual only, and are subject to change and will not necessarily accurately reflect the final plans and specifications for the development.



UNIT A - 07 Line

2	BEDROOMS + DEN	2.5	BATHROOMS
INTERIOR	1,904 SF	177 M ²	
TERRACE	169 SF	16 M ²	
TOTAL	2,073 SF	193 M ²	

17201 BISCAYNE BOULEVARD, NORTH MIAMI BEACH, FL 33160 P 1 866 990 1800 MARINAPALMS.COM



INTRACOASTAL

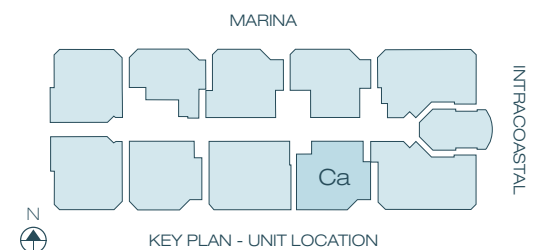
All dimensions are approximate and all floor plans and development plans are subject to change. Stated square footages and dimensions are measured to the exterior boundaries of the exterior walls and the centerline of interior demising walls between units and in fact vary from the dimensions that would be determined by using the description and definition of the "Unit" set forth in the Declaration (which generally only includes the interior airspace between the perimeter walls and excludes all interior structural components and other common elements). This method used herein is generally found in sales materials and is provided to allow a prospective buyer to compare the Units with units in other condominium projects that utilize the same method. The square footage of the units, as determined under both methods, can be found in Exhibit 2 to the Declaration of Condominium. Terraces are Limited Common Elements, but are not part of the Unit. Measurements of rooms set forth on this floor plan are generally taken at the farthest points of each given room (as described above and as if the room were a perfect rectangle), without regard for any cutouts or variations. Accordingly, the area of the actual room will typically be smaller than the product obtained by multiplying the stated length and width. All square footages and dimensions are estimates which are based on preliminary plans and will vary with actual construction. This floor plan represents the typical floor plan for the residence type indicated and is provided for informational purposes only. The actual floor plan of the residence may differ. All floor plans, specifications and other development plans are proposed and conceptual only, and are subject to change and will not necessarily accurately reflect the final plans and specifications for the development.



UNIT Ca - 08 Line

2	BEDROOMS + DEN	3	BATHROOMS
INTERIOR	1,893 SF		176 M ²
TERRACE	214 SF		20 M ²
TOTAL		2,107 SF	196 M ²

17201 BISCAYNE BOULEVARD, NORTH MIAMI BEACH, FL 33160 P 1 866 990 1800 MARINAPALMS.COM



INTRACOASTAL

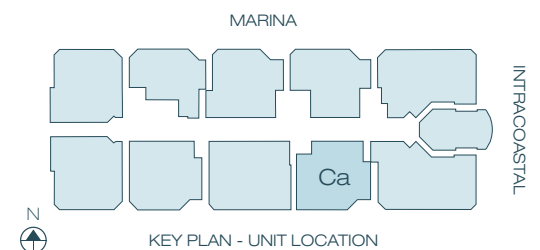
All dimensions are approximate and all floor plans and development plans are subject to change. Stated square footages and dimensions are measured to the exterior boundaries of the exterior walls and the centerline of interior demising walls between units and in fact vary from the dimensions that would be determined by using the description and definition of the "Unit" set forth in the Declaration (which generally only includes the interior airspace between the perimeter walls and excludes all interior structural components and other common elements). This method used herein is generally found in sales materials and is provided to allow a prospective buyer to compare the Units with units in other condominium projects that utilize the same method. The square footage of the units, as determined under both methods, can be found in Exhibit 2 to the Declaration of Condominium. Terraces are Limited Common Elements, but are not part of the Unit. Measurements of rooms set forth on this floor plan are generally taken at the farthest points of each given room (as described above and as if the room were a perfect rectangle), without regard for any cutouts or variations. Accordingly, the area of the actual room will typically be smaller than the product obtained by multiplying the stated length and width. All square footages and dimensions are estimates which are based on preliminary plans and will vary with actual construction. This floor plan represents the typical floor plan for the residence type indicated and is provided for informational purposes only. The actual floor plan of the residence may differ. All floor plans, specifications and other development plans are proposed and conceptual only, and are subject to change and will not necessarily accurately reflect the final plans and specifications for the development.



UNIT Ca (Alternative) - 08 Line

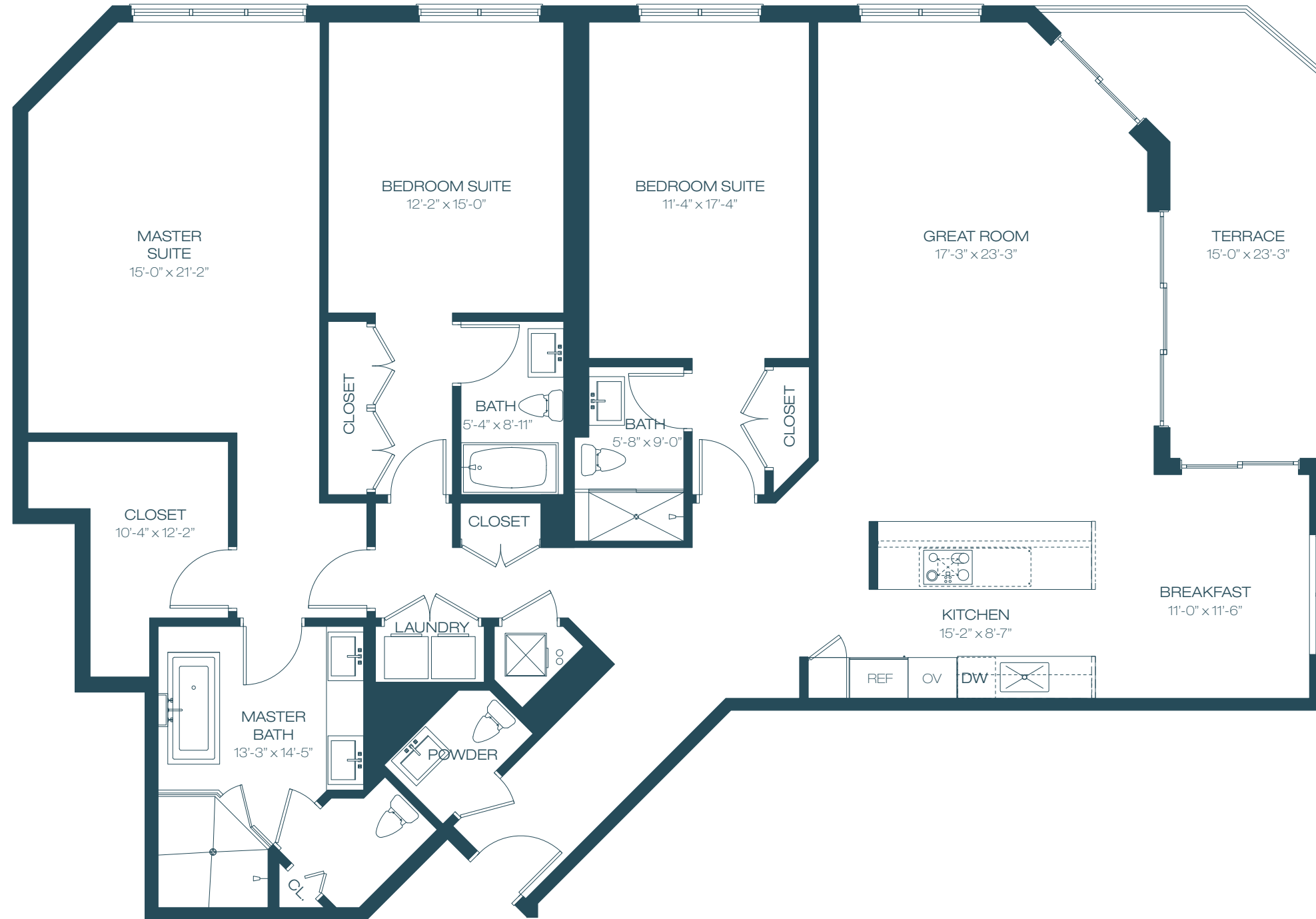
2	BEDROOMS + DEN	3	BATHROOMS
INTERIOR	1,893 SF	176 M ²	
TERRACE	214 SF	20 M ²	
TOTAL	2,107 SF	196 M²	

17201 BISCAYNE BOULEVARD, NORTH MIAMI BEACH, FL 33160 P 1 866 990 1800 MARINAPALMS.COM



INTRACOASTAL

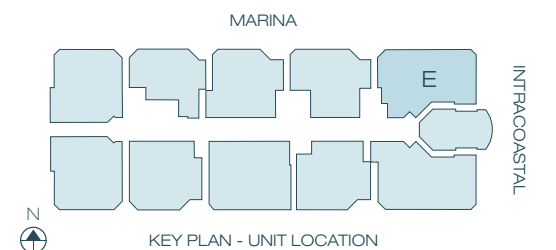
All dimensions are approximate and all floor plans and development plans are subject to change. Stated square footages and dimensions are measured to the exterior boundaries of the exterior walls and the centerline of interior demising walls between units and in fact vary from the dimensions that would be determined by using the description and definition of the "Unit" set forth in the Declaration (which generally only includes the interior airspace between the perimeter walls and excludes all interior structural components and other common elements). This method used herein is generally found in sales materials and is provided to allow a prospective buyer to compare the Units with units in other condominium projects that utilize the same method. The square footage of the units, as determined under both methods, can be found in Exhibit 2 to the Declaration of Condominium. Terraces are Limited Common Elements, but are not part of the Unit. Measurements of rooms set forth on this floor plan are generally taken at the farthest points of each given room (as described above and as if the room were a perfect rectangle), without regard for any cutouts or variations. Accordingly, the area of the actual room will typically be smaller than the product obtained by multiplying the stated length and width. All square footages and dimensions are estimates which are based on preliminary plans and will vary with actual construction. This floor plan represents the typical floor plan for the residence type indicated and is provided for informational purposes only. The actual floor plan of the residence may differ. All floor plans, specifications and other development plans are proposed and conceptual only, and are subject to change and will not necessarily accurately reflect the final plans and specifications for the development.



UNIT E - 09 Line

3	BEDROOMS	3.5	BATHROOMS
INTERIOR		2,421 SF	225 M ²
TERRACE		203 SF	19 M ²
TOTAL		2,624 SF	244 M ²

17201 BISCAYNE BOULEVARD, NORTH MIAMI BEACH, FL 33160 P 1 866 990 1800 MARINAPALMS.COM



All dimensions are approximate and all floor plans and development plans are subject to change. Stated square footages and dimensions are measured to the exterior boundaries of the exterior walls and the centerline of interior demising walls between units and in fact vary from the dimensions that would be determined by using the description and definition of the "Unit" set forth in the Declaration (which generally only includes the interior airspace between the perimeter walls and excludes all interior structural components and other common elements). This method used herein is generally found in sales materials and is provided to allow a prospective buyer to compare the Units with units in other condominium projects that utilize the same method. The square footage of the units, as determined under both methods, can be found in Exhibit 2 to the Declaration of Condominium. Terraces are Limited Common Elements, but are not part of the Unit. Measurements of rooms set forth on this floor plan are generally taken at the farthest points of each given room (as described above and as if the room were a perfect rectangle), without regard for any cutouts or variations. Accordingly, the area of the actual room will typically be smaller than the product obtained by multiplying the stated length and width. All square footages and dimensions are estimates which are based on preliminary plans and will vary with actual construction. This floor plan represents the typical floor plan for the residence type indicated and is provided for informational purposes only. The actual floor plan of the residence may differ. All floor plans, specifications and other development plans are proposed and conceptual only, and are subject to change and will not necessarily accurately reflect the final plans and specifications for the development.



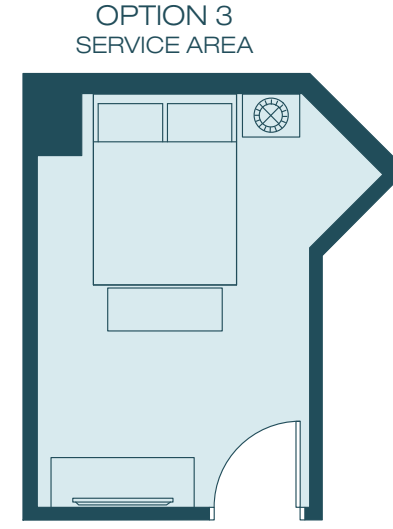
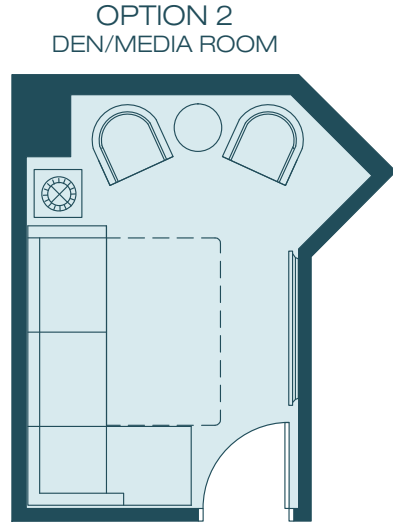
MW: Microwave OV: Oven DW: Dishwasher REF: Refrigerator/Freezer

SAMPLE FLEXspace OPTIONS

OPTION 1 HOME OFFICE
Private, quiet, discreet with a sleeper sofa. The space becomes a wonderful place to conduct business or other affairs.

OPTION 2 DEN/MEDIA ROOM
This FLEXspace is ideal for distraction-free enjoyment of movies, gaming or other media, without disrupting the household. It can also be used for overflow sleeping.

OPTION 3 SERVICE AREA
Keep the entourage under one roof by utilizing your FLEXspace as a spare room.



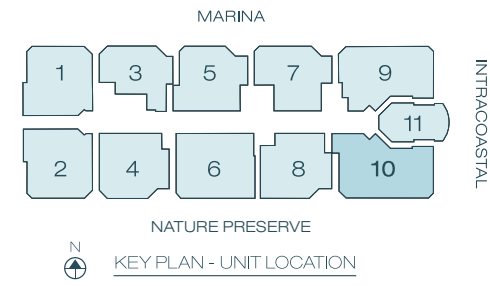
Interiors by Steven G. Inc.
Interior Design

"This degree of versatility and size in a condominium floor plan is almost unheard of. It provides the ultimate in a luxury residence. We have presented just three of the infinite possible uses for a room such as this."

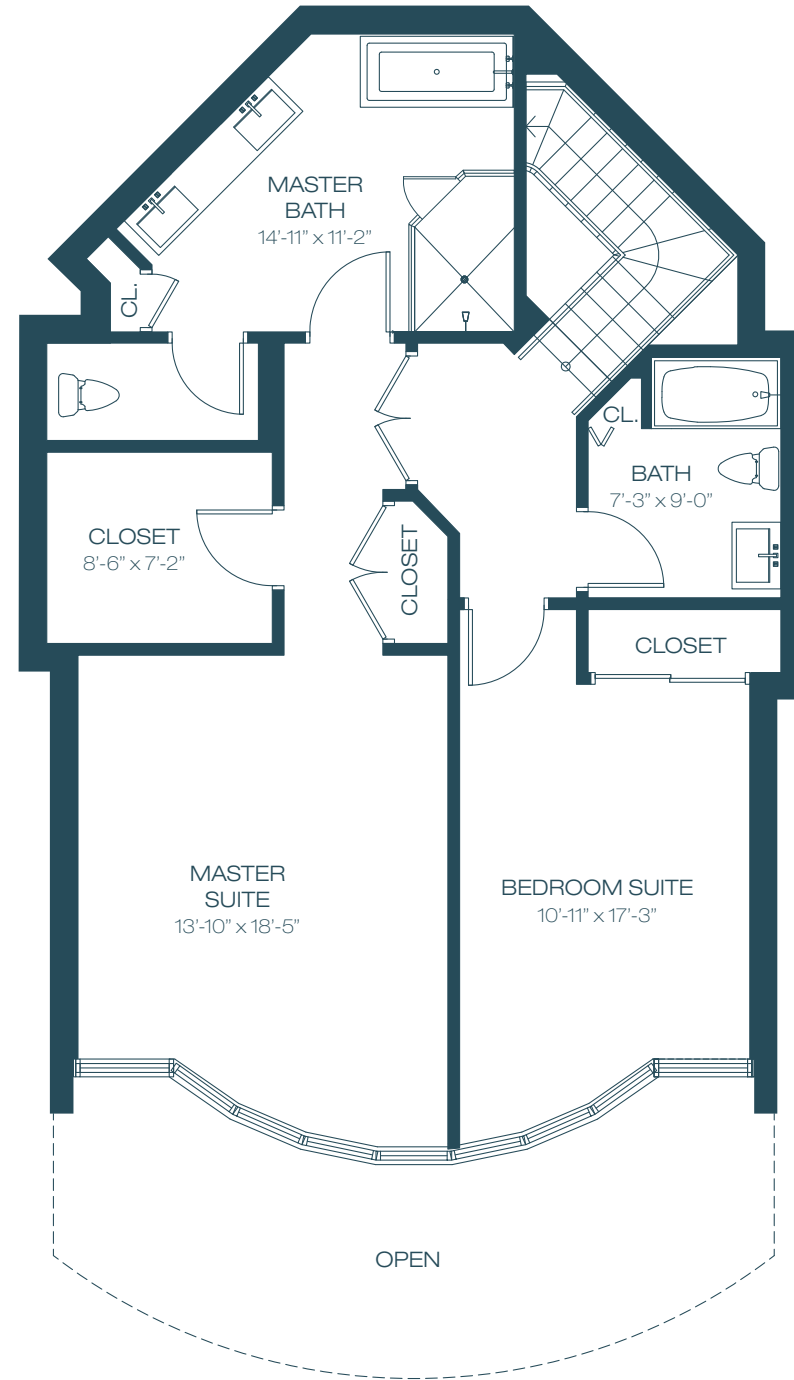
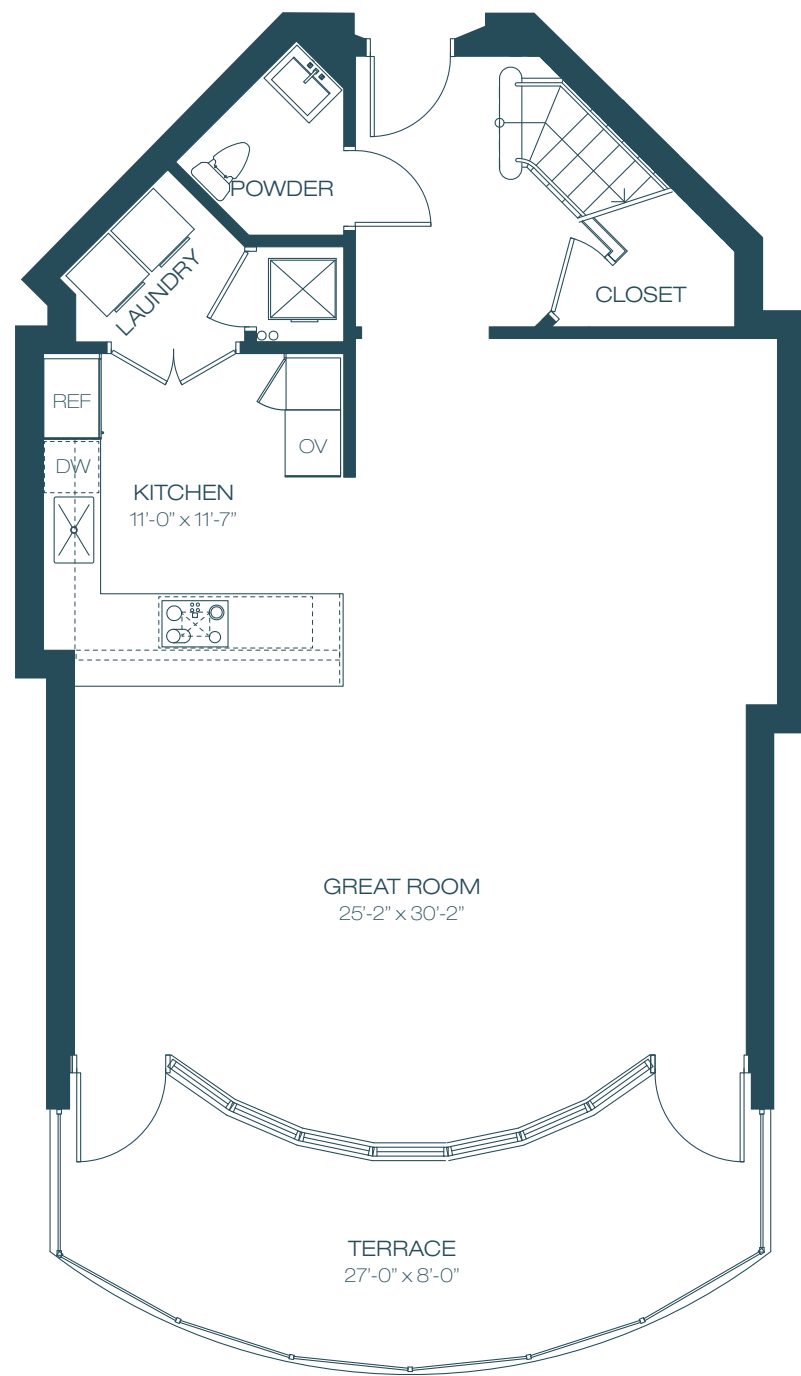
-Steven G.

THE PERFECT 10

3	BEDROOMS + FLEXspace	3.5	BATHROOMS
INTERIOR		2,599 SF	241 M ²
TERRACE		203 SF	19 M ²
TOTAL		2,802 SF	260 M ²



All dimensions are approximate and all floor plans and development plans are subject to change. Stated square footages and dimensions are measured to the exterior boundaries of the exterior walls and the centerline of interior demising walls between units and in fact vary from the dimensions that would be determined by using the description and definition of the "Unit" set forth in the Declaration (which generally only includes the interior airspace between the perimeter walls and excludes all interior structural components and other common elements). This method used herein is generally found in sales materials and is provided to allow a prospective buyer to compare the Units with units in other condominium projects that utilize the same method. The square footage of the units, as determined under both methods, can be found in Exhibit 2 to the Declaration of Condominium. Terraces are Limited Common Elements, but are not part of the Unit. Measurements of rooms set forth on this floor plan are generally taken at the farthest points of each given room (as described above and as if the room were a perfect rectangle), without regard for any cutouts or variations. Accordingly, the area of the actual room will typically be smaller than the product obtained by multiplying the stated length and width. All square footages and dimensions are estimates which are based on preliminary plans and will vary with actual construction. This floor plan represents the typical floor plan for the residence type indicated and is provided for informational purposes only. The actual floor plan of the residence may differ. All floor plans, specifications and other development plans are proposed and conceptual only, and are subject to change and will not necessarily accurately reflect the final plans and specifications for the development.

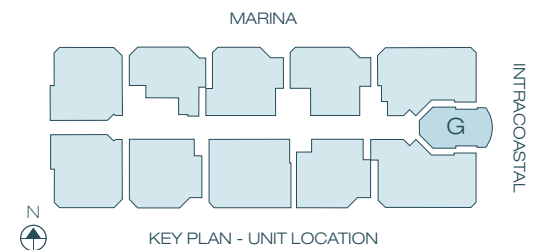


UNIT G - 11 Line

2	BEDROOMS	2.5	BATHROOMS
INTERIOR		2,080 SF	193 M ²
TERRACE		216 SF	20 M ²
TOTAL		2,296 SF	213 M ²

INTRACOASTAL

17201 BISCAYNE BOULEVARD, NORTH MIAMI BEACH, FL 33160 P 1 866 990 1800 MARINAPALMS.COM



All dimensions are approximate and all floor plans and development plans are subject to change. Stated square footages and dimensions are measured to the exterior boundaries of the exterior walls and the centerline of interior demising walls between units and in fact vary from the dimensions that would be determined by using the description and definition of the "Unit" set forth in the Declaration (which generally only includes the interior airspace between the perimeter walls and excludes all interior structural components and other common elements). This method used herein is generally found in sales materials and is provided to allow a prospective buyer to compare the Units with units in other condominium projects that utilize the same method. The square footage of the units, as determined under both methods, can be found in Exhibit 2 to the Declaration of Condominium. Terraces are Limited Common Elements, but are not part of the Unit. Measurements of rooms set forth on this floor plan are generally taken at the farthest points of each given room (as described above and as if the room were a perfect rectangle), without regard for any cutouts or variations. Accordingly, the area of the actual room will typically be smaller than the product obtained by multiplying the stated length and width. All square footages and dimensions are estimates which are based on preliminary plans and will vary with actual construction. This floor plan represents the typical floor plan for the residence type indicated and is provided for informational purposes only. The actual floor plan of the residence may differ. All floor plans, specifications and other development plans are proposed and conceptual only, and are subject to change and will not necessarily accurately reflect the final plans and specifications for the development.